

Silo Discharge CENTREX™



CONTENT

3	CENTREX™ with internal drive type CTX-I
4	CENTREX™ with external drive and stationary inner cone type CTX-A
5	CENTREX™ with external drive and rotating inner cone type CTX-AD
6	CENTREX™ Applications
8	Transport and discharge of various types of Bulk Material
9	Assembling of CENTREX™ Units Silo Discharge from CENTREX™ with Truck Loading
10	Technical Data
11	Bulk Material testing in our Laboratory
12	Components
14	Conversion & Refurbishments
15	After Sales Service

CENTREX™

Trouble-free silo discharge for sticky and cohesive materials with poor flow properties with First-in and First-out principle.

The logarithmically shaped discharge arm moves the bulk material towards the central outlet underneath the inner cone, where it is discharged into a chute. The discharge arm acts the material from underneath the material column and reaches beyond the outlines of the silo wall, which avoids accumulations and prevents the bulk material from sticking to the silo wall. Consequently, the material column is brought to descend in a regular and uniform manner, which maintains the homogeneity of the stored material, thus avoiding segregation and bridging.

The logarithmic design of the discharge arm prevents the bulk material from being compacted when moved to the central outlet. In addition it minimizes wear and requires less drive power.

On account of its very compact and rigid design, the CENTREX™ is also an ideal solution for installation into or underneath existing bins or silos.

Three basic alternatives are available with the CENTREX™ system. The choice depends either on the technical features of the bulk material or on the type of application within a given process.

CENTREX™ with internal drive type Louise CTX-I

CENTREX™ with external drive and stationary inner cone type Louise CTX-A

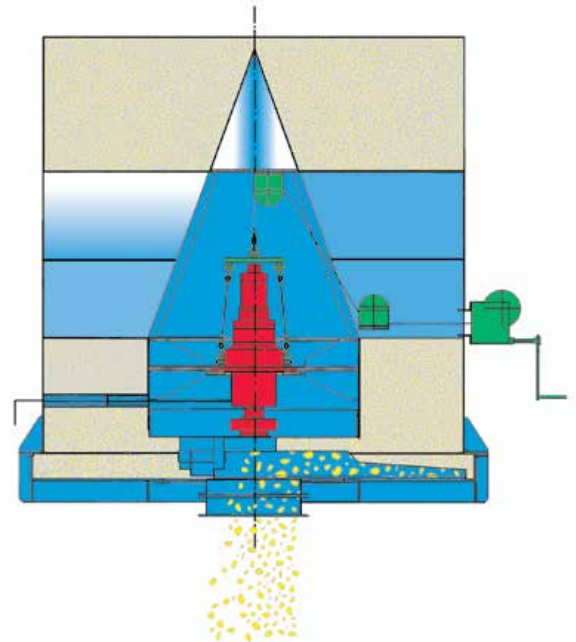
CENTREX™ with external drive and rotating inner cone type Louise CTX-AD

Material examples which can be discharged:

- FGD Gypsum
- Gypsum
- Coal
- Limestone
- Clay
- Marl
- Wet ash



View through the hollow girder onto the drive unit



Advantages of the internal drive:

- Minimum number of components required
- Almost maintenance free operation
- Low construction height
- Maintenance access through support arm

CENTREX™ with internal drive type CTX-I

A CENTREX™ with internal drive can be of shock-proof or entirely pressure and water-proof design.

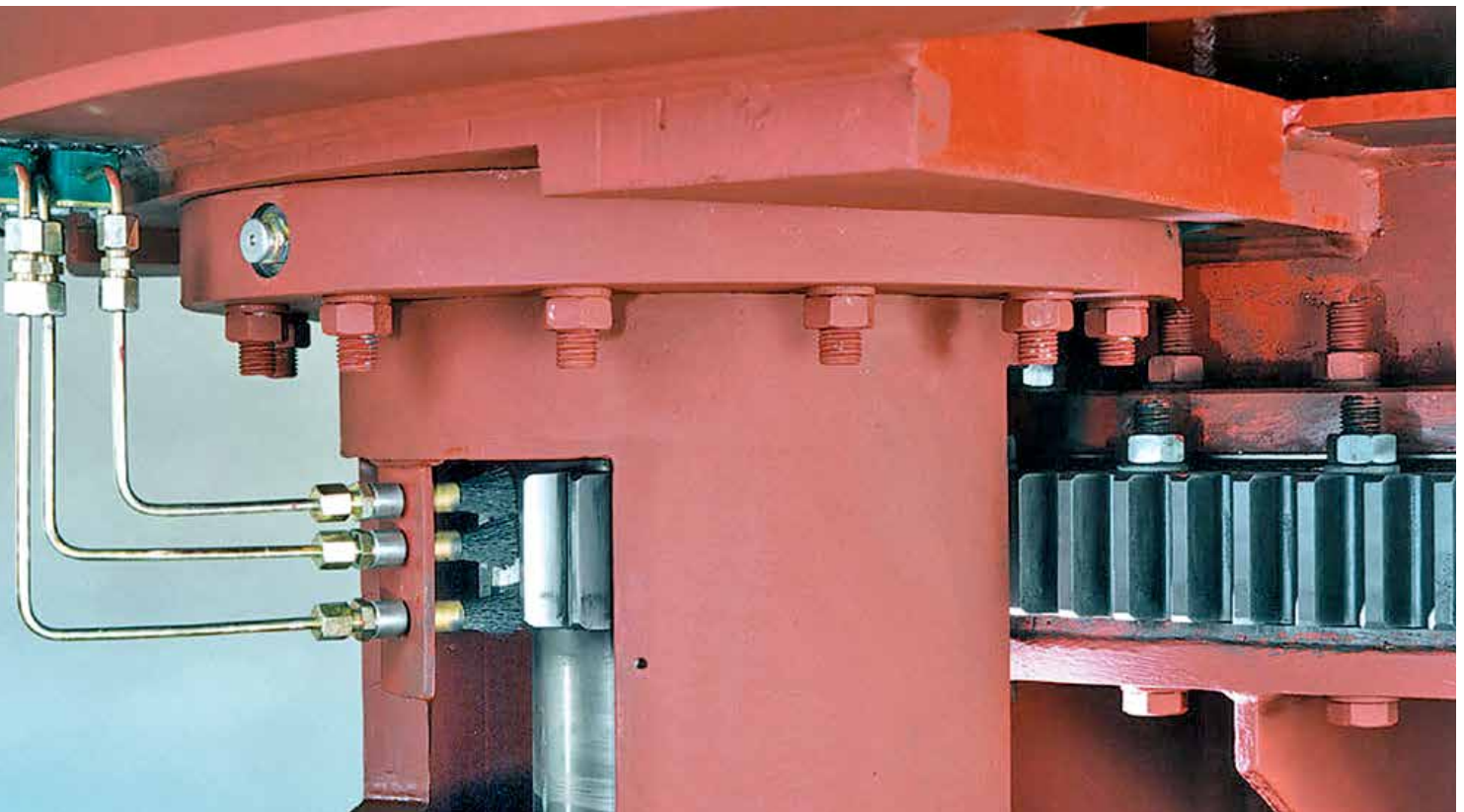
It is therefore particularly suitable for:

- Feeding of mills, dryers and kilns
- Sludge discharge from sediment retention basins
- Discharge from silos operating with inert gas
- Discharge from silos with poisonous materials
- Recommended silo diameter of 2,5 - 8 m

Radially arranged support arms connect the inner cone with the silo wall. With their roof-shaped upper section serving as deflector plate, these support arms are designed to prevent the stored material from sticking to the arms.

At least one of these arms is enlarged to allow access to the inside of the cone. The internal drive unit is accessible and can be removed with the rope winch also installed inside the cone.

This alternative with its compact design is a most economic solution.



Two separate lubrication lines: One to lubricate the gear of the slewing ring, one to lubricate the bearings of the slewing ring

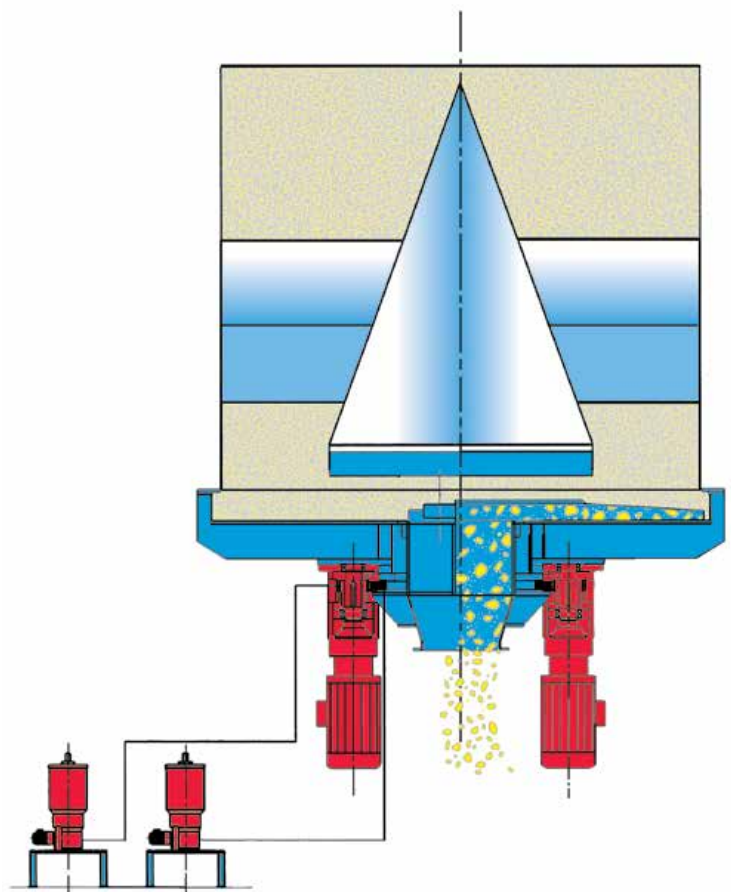
CENTREX™ with external drive and stationary inner cone type CTX-A

With this alternative, the inner cone, discharge arm and rotary chute form one unit designed for easy discharge of even extremely difficult bulk materials. The rotating movement of the cone activates the stored material and significantly improves the mass flow of the bulk material. The entire rotating unit is mounted onto a slewing ring with spherical bearing and gear ring power transmission.

Due to the additional activation of the stored material caused by the rotation of the inner cone as part of the rotating unit, bridging is effectively prevented.

Advantages:

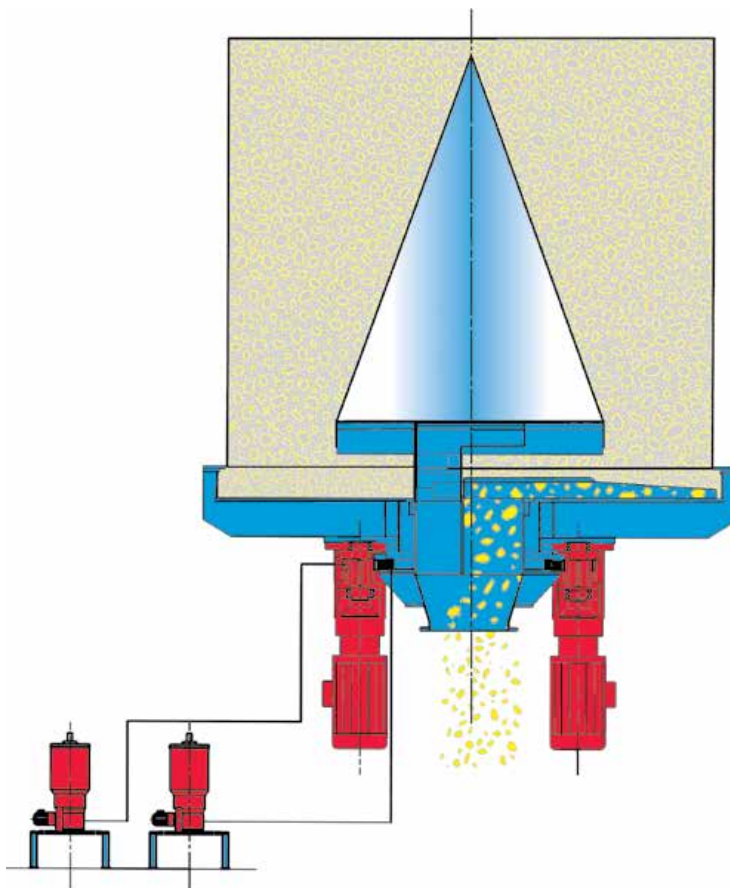
- Easy maintenance of drive unit and slewing ring
- Use also possible for silos done to 1 m diameter
- With rotating cone bridges will be destroyed
- High forces transferable with 2 or more drives





CENTREX™ type CTX-AD

CENTREX™ with external drive and rotating inner cone type CTX-AD



The drive unit of this CENTREX™ design is fitted to the discharge bottom for easy access. This design also features radially arranged support plates connecting the inner cone with the silo wall.

This alternative with external drive and stationary inner cone offers ideal conditions for applications involving a high torque and requiring easy maintenance.

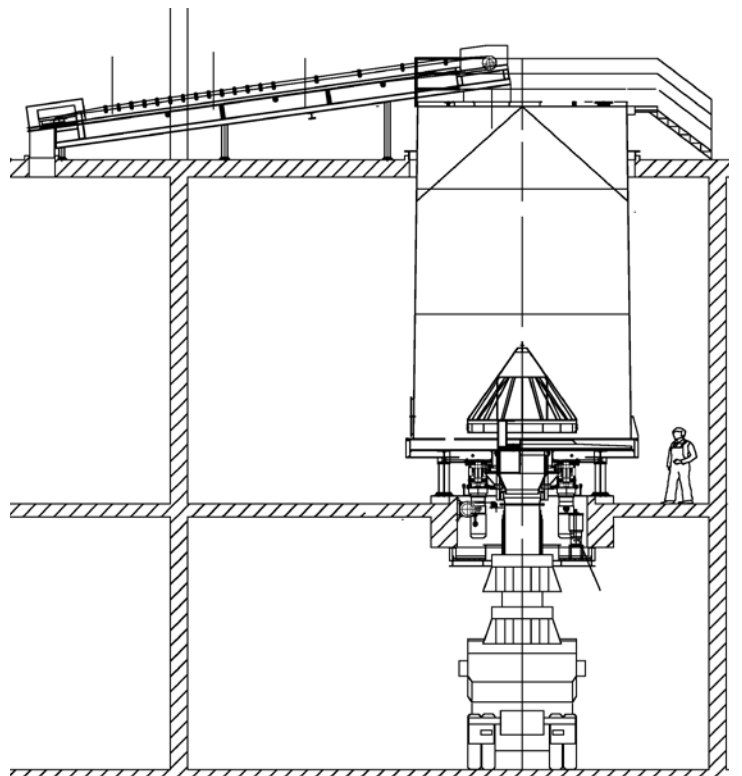


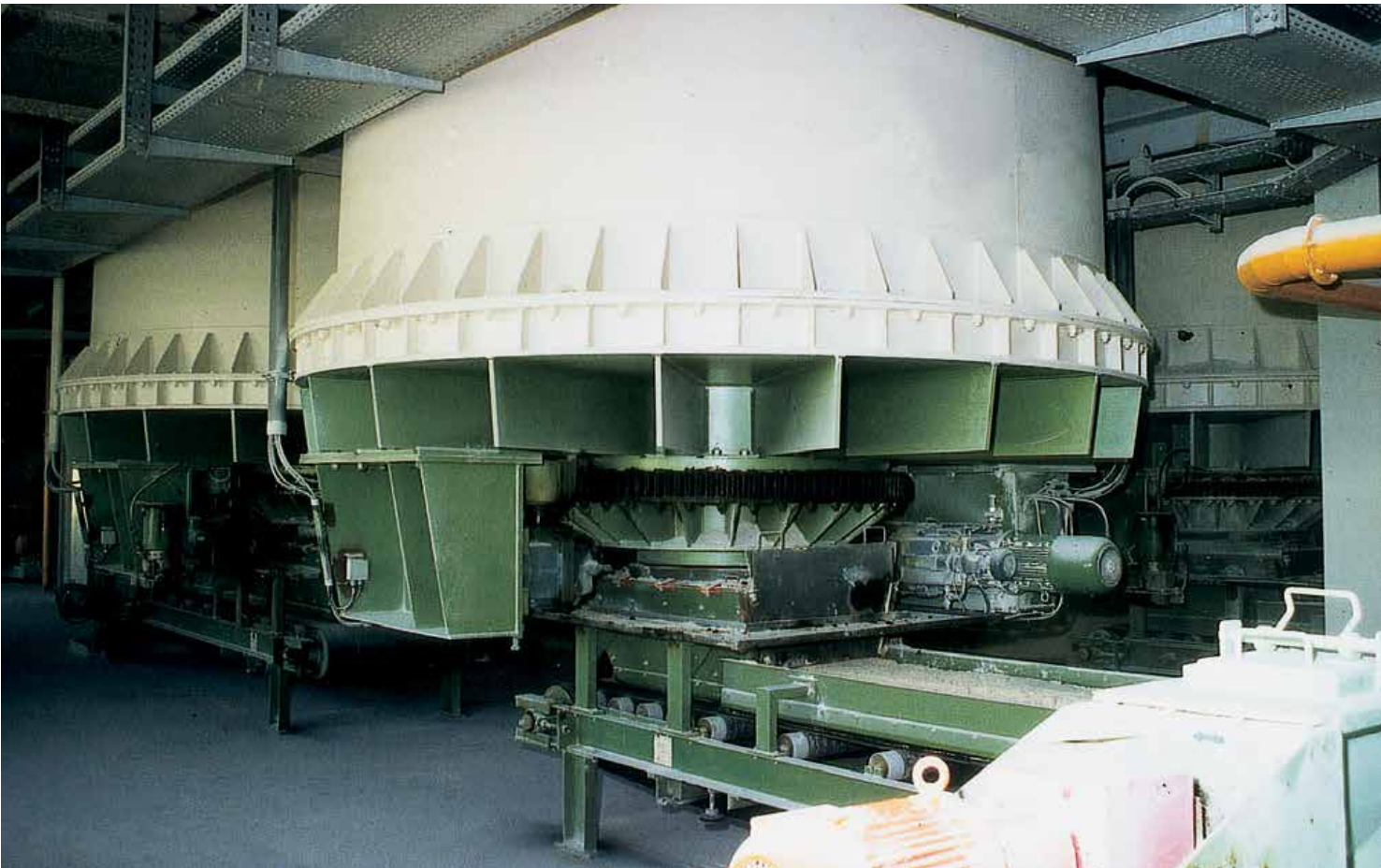
CENTREX™ - Feeding of FGD Gypsum to silo

CENTREX™ Applications



CENTREX™ silo - Detail





CENTREX™ with two external drives for discharge of FGD Gypsum loading onto a weigh feeder



Truck loading underneath CENTREX™

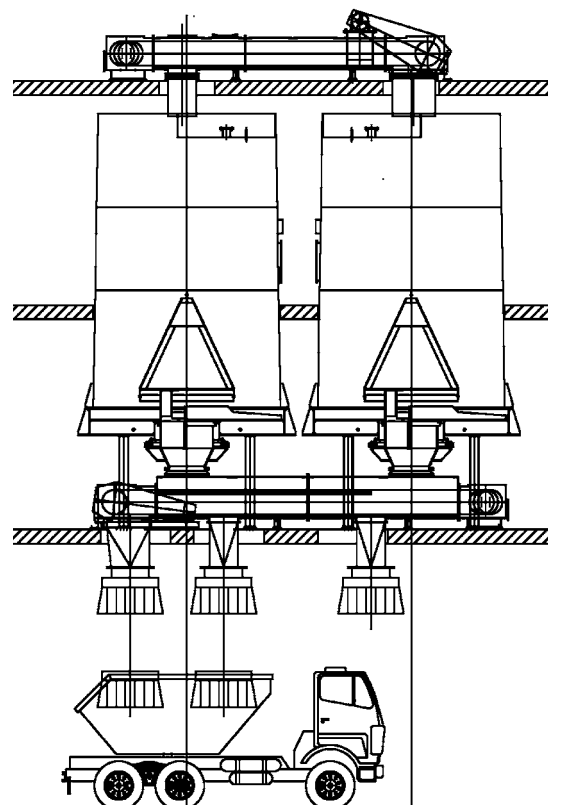


LOUISE Double-Strand Chain Conveyor feeding 2 silos

Transport and discharge of various types of Bulk Material



CENTREX™ type CTX-A with external drive for FGD Gypsum



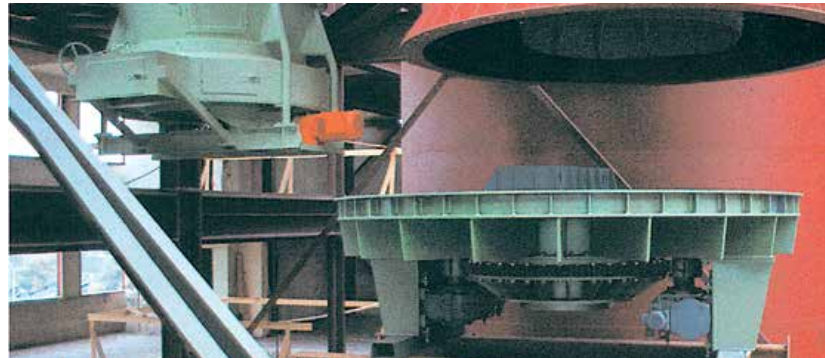
Assembling of CENTREX™ Units



Lifting of workshop



Assembling of CENTREX™ bottom in the field



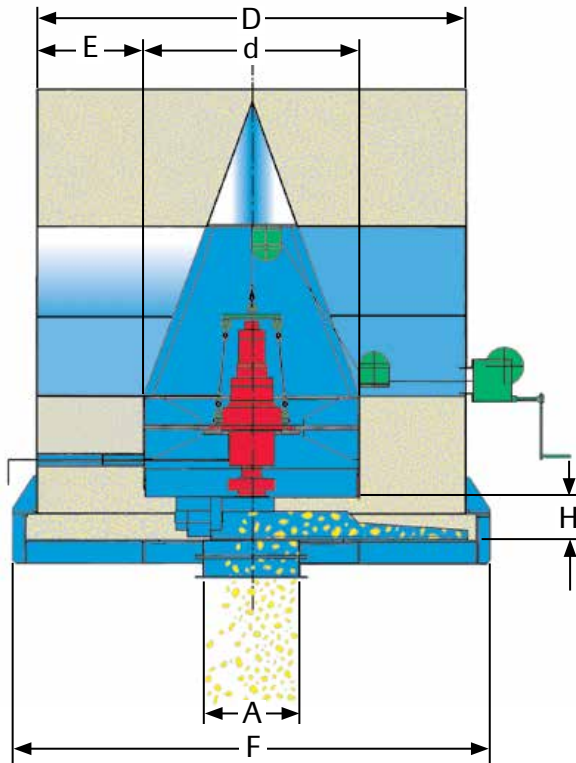
Assembling of a CENTREX™ silo

Silo Discharge from CENTREX™ with Truck Loading

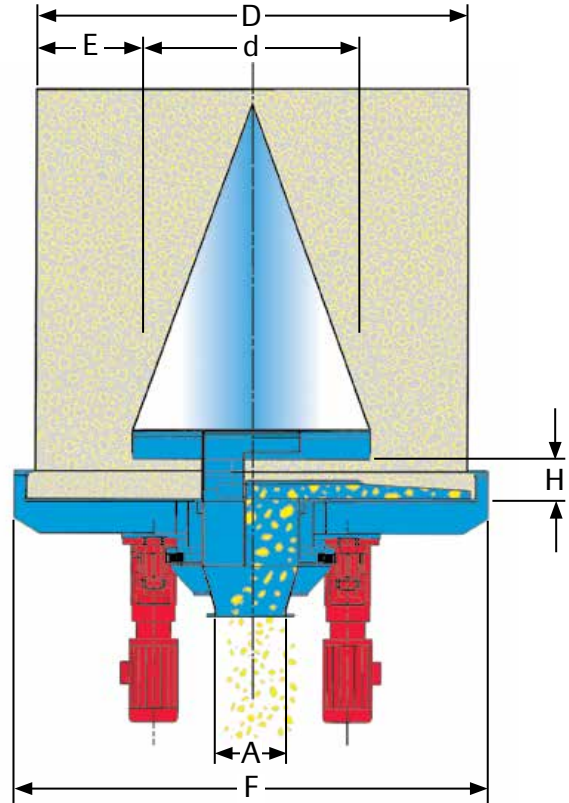


CENTREX™ with internal drive. Discharge from a steel plate silo with truck loading with truck loading

CENTREX™ with internal drive



CENTREX™ with external drive

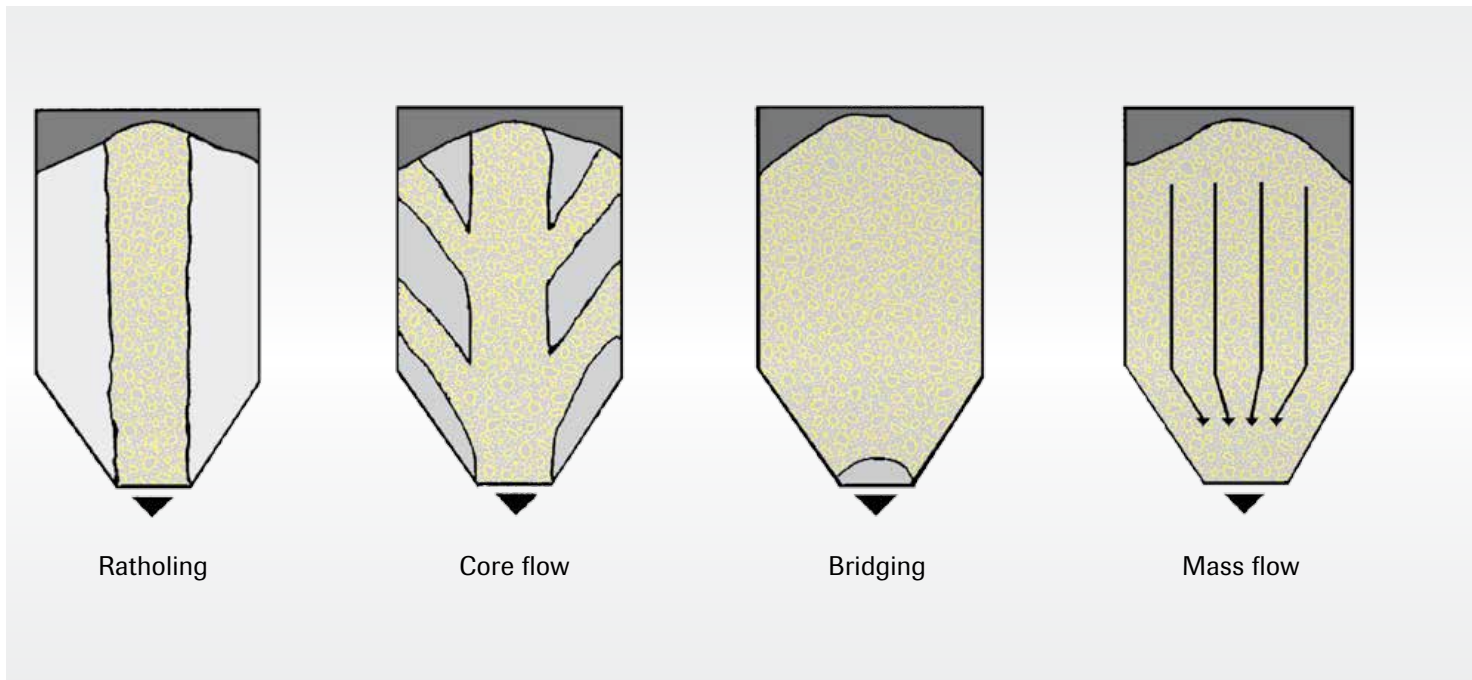


Centrex™ with internal drive: minimum discharge arm diameter 2500 mm.

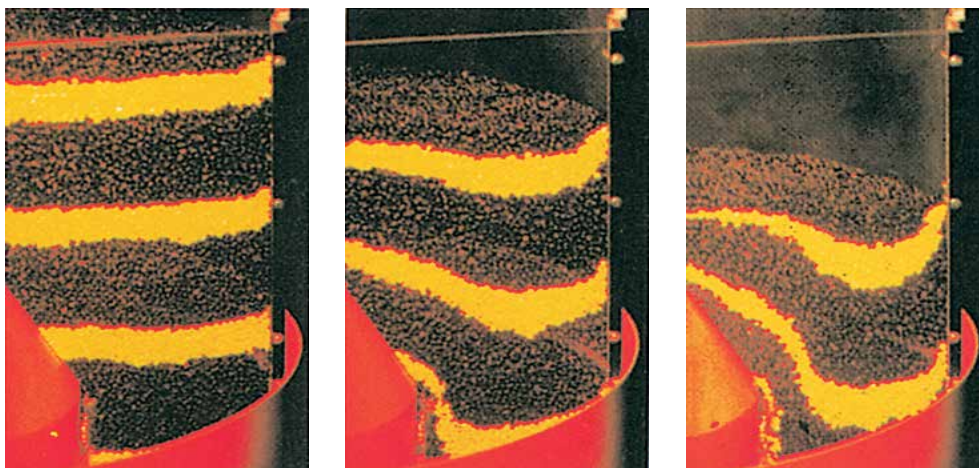
Centrex™ with external drive and rotating cone: max. discharge arm diameter: 4000 mm.

Technical Data

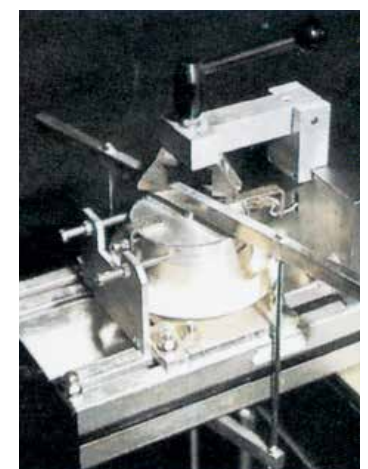
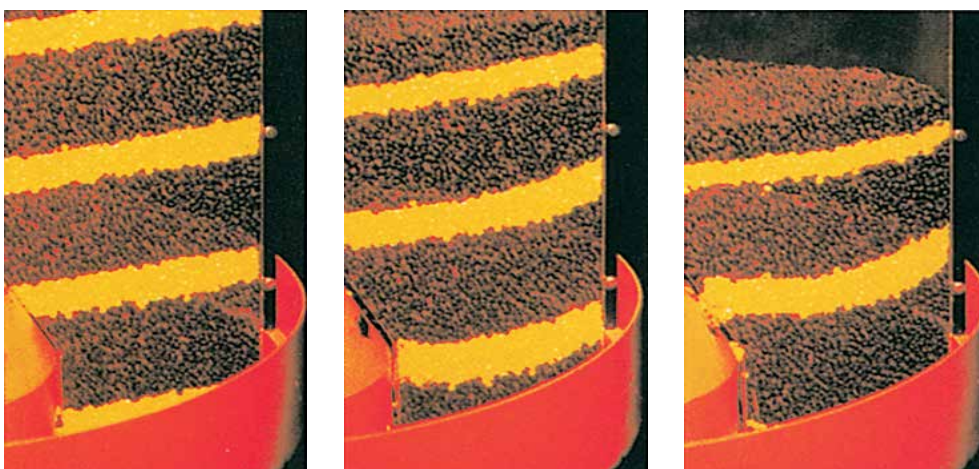
D	F	E	d	H	A	Q [m ³ /h]		
						Theoretical discharge capacity Circular speed at discharge arm tip		
Discharge arm ø [mm]	Outer ø [mm]	Penetra- tion depth [mm]	Inner cone ø [mm]	Slot height [mm] (adjustable)	Outlet ø [mm]	1 m/s	0.5 m/s	0.2 m/s
1000	1340	250	500	100	220	70	35	14
1500	1840	375	750	150	340	100	50	20
2000	2380	500	1000	200	450	140	70	28
2500	2880	625	1250	250	560	180	90	36
3000	3380	750	1500	300	670	220	110	44
3500	3880	875	1750	350	780	290	145	58
4000	4380	1000	2000	400	900	360	180	72
5000	5420	1000	3000	500	1100	520	260	104
6000	6420	1000	4000	600	1350	730	365	146
7000	7460	1000	5000	700	1550	910	455	182
8000	8460	1000	6000	800	1770	1000	500	200



Bulk Material testing in our Laboratory

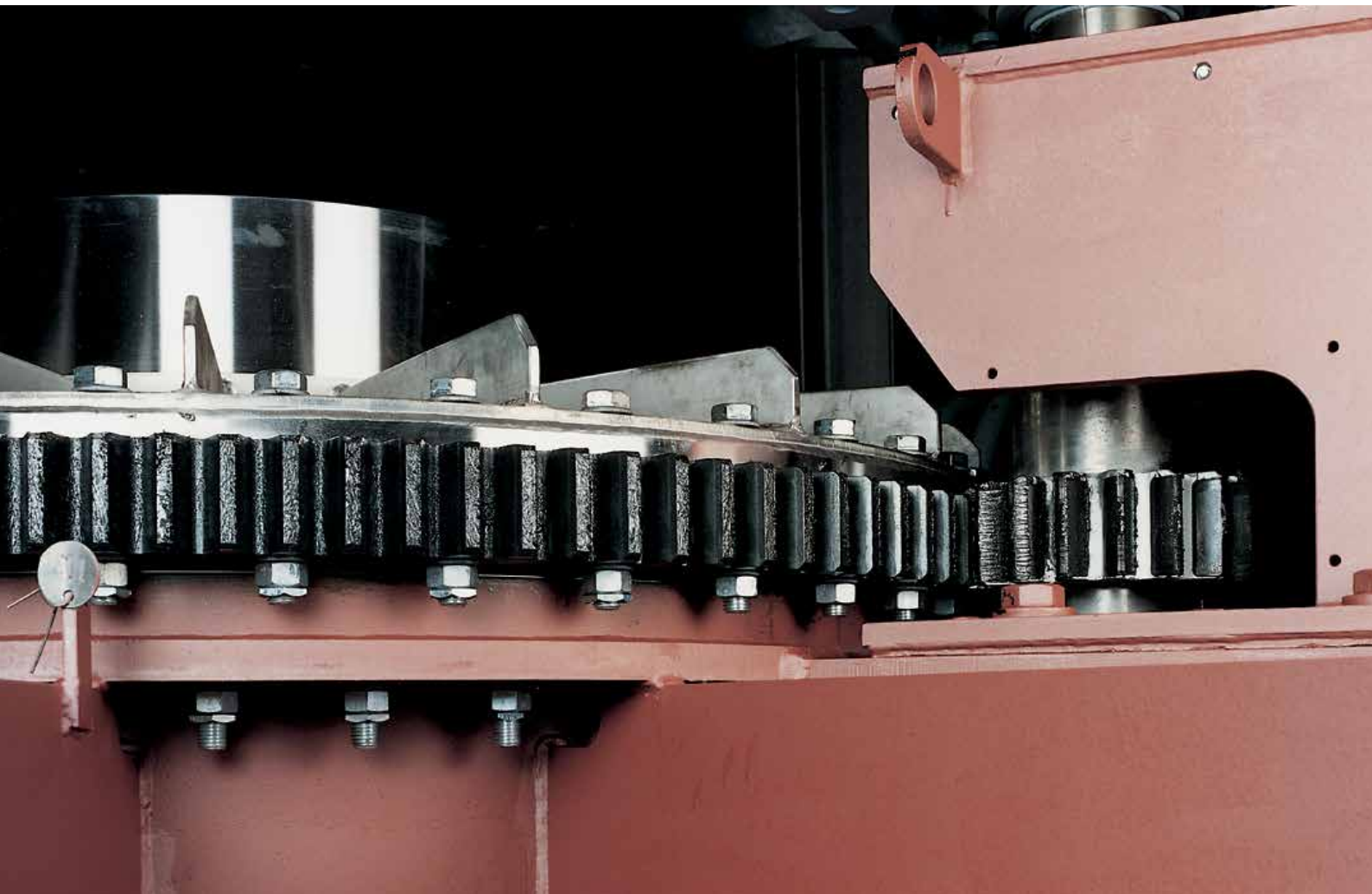


To determine the physical and mechanical properties and behaviour of specific bulk materials, our laboratory incorporates a large variety of testing equipment. Various test methods allow to determine the correct application of our products, e.g. shear testing.



Bulk material tests

Jennicke shear cell



Drive arrangement of CTX-A, external drive - Detail

Components



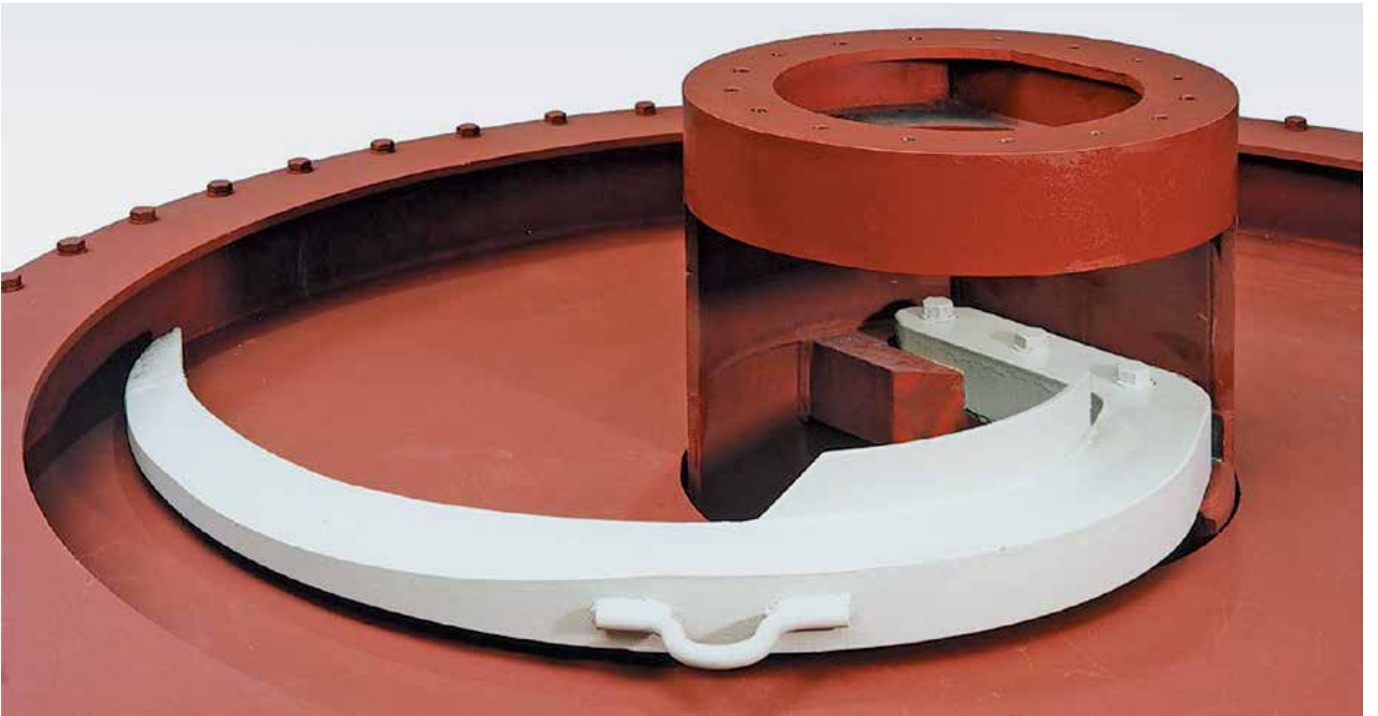
Ready assembled CTX-I 5000, view into the support/maintenance arm, onto the planetary drive unit



CENTREX™ discharge arm for internal drive



CENTREX™ Assembly in Rheinberg's workshop



CENTREX™ discharge arm - Detail



Installation of new bucket strand

Conversions and Refurbishments

- Upgrading of existing plant components
- Targeting increased efficiency
- Higher output
- Improved availability

With our expert team of engineers planning selective modernisation measures, we pay special attention to the upgrading of existing plant components, targeting increased efficiency, higher output rates and improved availability.

Upgrading of your materials handling and storage equipment to state-of-the-art technology is achieved through a tailor-made refurbishment process under optimum utilisation of time and budget.

Most of the existing components are re-used in the refurbishment process to save cost.

Engineered conversions and refurbishments for increased efficiency and output are performed on AUMUND equipment as well as on the equipment of other manufacturers.



Pre-assembly of chain strands

After Sales Service

Customer Proximity around the World

At AUMUND, service does not end at the sale of the equipment. It's the beginning of a long-term partnership. AUMUND offers you a full range of services – from commissioning to the delivery of quality spare and wear parts to customized preventive maintenance programs and equipment upgrading. The benefits for you: Maximum equipment efficiency at lower operating cost.

Commissioning and Field Service

Today, presence “on the spot” is an absolute “must”. Therefore, our commissioning and service engineers operate from support centers on all continents to guarantee immediate and competent support.

Spare and Wear Parts

A comprehensive range of genuine spare parts is available for our entire product range from stocks in Germany, Hong Kong and the USA. Our product specialists provide assistance and respond instantly.

Retrofits & Modernisation

Aged and worn equipment? Capacity increase needed? Too high operating cost? Aumund “just as new” retrofits are economical and tailor-made solutions for improving your existing equipment at reasonable cost.

Preventive Maintenance

Knowing beforehand that service will be needed allows you to schedule downtime and save money with timely repairs. Repairs or retrofits can be accurately anticipated allowing for the downtime to be at the most convenient times and at the lowest possible cost.



THE AUMUND GROUP

GERMANY

AUMUND Fördertechnik GmbH

Saalhoffer Str. 17
47495 Rheinberg
Phone: +49 - 2843 - 72 0
Fax: +49 - 2843 - 6 02 70
e-mail: aumund@aumund.de
www.aumund.com

Aumund Logistic GmbH

Saalhoffer Str. 17
47495 Rheinberg
Phone: +49 - 2843 - 72 0
Fax: +49 - 2843 - 7 24 73
e-mail: logistic@aumund.de
www.aumund.com

SCHADE Lagertechnik GmbH

Dorstener Straße 360
44653 Herne
Phone: +49 - 2325 - 58 74 0
Fax: +49 - 2325 - 58 74 74
e-mail:
info@schade-lagertechnik.de
www.schade-lagertechnik.com

GREAT BRITAIN

SAMSON Materials Handling Ltd.

Gemini House Cambridgeshire
Business Park, 1 Bartholomew's Walk
Ely, Cambridgeshire CB7 4EA
Phone: +44 - 1353 - 665 001
Fax: +44 - 1353 - 666 734
e-mail: sales@samson-mh.com
www.samson-mh.com

INDIA

AUMUND Engineering Private Ltd.

2nd Floor, Lakshmi Neela Rite Choice
Chambers · 9, Bazulla Road,
T. Nagar Chennai - 600 017
Phone: +91 - 44 - 4393 63 00
Fax: +91 - 44 - 2815 60 46
e-mail: aumund@vsnl.com

HONG KONG SAR

AUMUND Asia (H.K.) Limited

Unit 3B & 5, 30/F.
148 Electric Road
North Point
Hong Kong
Phone: +852 - 3695 - 43 33
Fax: +852 - 3695 - 43 11
e-mail: info@aumund-asia.com

DUBAI U.A.E.

AUMUND Fördertechnik GmbH Representative Office

P.O. Box 35291
Dubai, UAE
Phone: +971 - 4 - 2823762
e-mail: catalina@aumund.com

THE NETHERLANDS

AUMUND Holding B.V.

Wilhelminapark 40
5911 EE Venlo
Phone: +31 - 77 - 320 01 11
Fax: +31 - 77 - 320 07 28
e-mail: info@aumund-holding.nl

SWITZERLAND

AUMUND AG

Arther Str. 3
6301 Zug
Phone: +41 - 41 - 710 10 82
Fax: +41 - 41 - 710 42 02
e-mail: info@aumund.ch

RUSSIA

AUMUND Representative Office

German-Russian House, Office 44
ul. Malaja Pirogovskaja 5
119435 Moscow / Russia
Phone: +7 - 495 - 287 90 02
Fax: +7 - 495 - 287 90 06
e-mail: info@aumund.ru

FRANCE

AUMUND France S.A.R.L.

43, rue de Trévisse · F 75009 Paris
Phone: +33 - 1 - 42 46 72 72
Fax: +33 - 1 - 42 46 72 74
e-mail: aumund@aumund.fr

BRAZIL

AUMUND Ltda.

Avenida Eng. Luis Carlos Berrini
716 - 4.andar - conj. 41
04571-000 - São Paulo / SP
Phone: +55 - 11 - 3059 0160
Fax: +55 - 11 - 3059 0161
e-mail: aumund@aumund.com.br

USA

AUMUND Corporation

1825 Barrett Lakes Boulevard
Barrett Lakes Center II
Suite 520
Kennesaw, GA 30144
Phone: +1 - 770 - 226 - 95 78
Fax: +1 - 770 - 953 - 48 44
e-mail: sales@aumundusa.com

P.R. CHINA

AUMUND Machinery Trading (Beijing) Co. Ltd.

Rm. 7-8, 22-F, East Ocean Centre
No. 24 Jianguomenwai Avenue
Chaoyang District
Beijing 100004
Phone: +86 - 10 - 65 15 58 13 / 14
Fax: +86 - 10 - 65 15 58 15
e-mail: aumund@aumund.cn



AUMUND Headquarters in Rheinberg, Germany

AUMUNDGROUP

Your partner for all requirements regarding material handling and storage.

We design, engineer, manufacture, erect and service reliable equipment.

Reputation and competence proven by more than 10.000 installations in over 100 countries.

AUMUND Foerdertechnik GmbH - Saalhofer Str. 17 - 47495 Rheinberg (Germany)

Tel.: + 49 (0) 28 43-720 · Fax: + 49 (0) 28 43-6 02 70 · e-mail: aumund@aumund.de

www.aumund.com